

# Tz'dakah Box Pattern

Designed by Lois Silverman, NY State Branch <[Itsilver@adelphia.net](mailto:Itsilver@adelphia.net)>

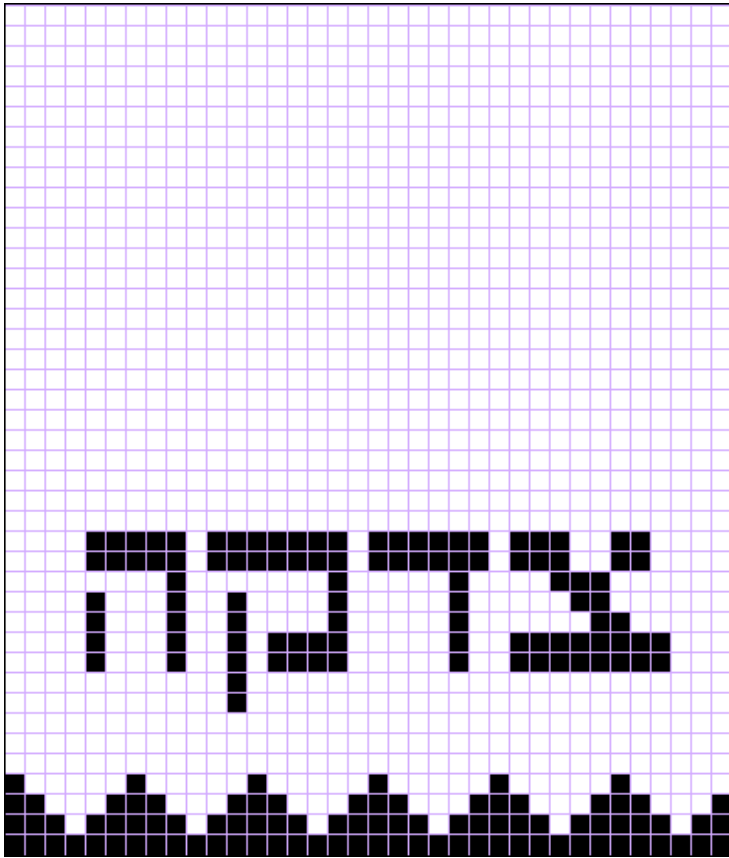
This box is stitched using two strands of knitting worsted weight yarn on 7 hole per inch plastic canvas. By using another size canvas, the box will have different dimensions and will require a more or fewer strands of yarn for working. Plastic canvas also comes in different colors.

The letters are worked in half cross, continental or basketweave stitch, and the border pattern is done in straight stitches.

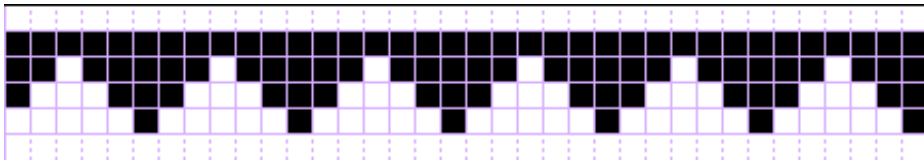
Make sure to trim nubs before stitching.



**FRONT  
AND  
BACK  
MAKE 2**

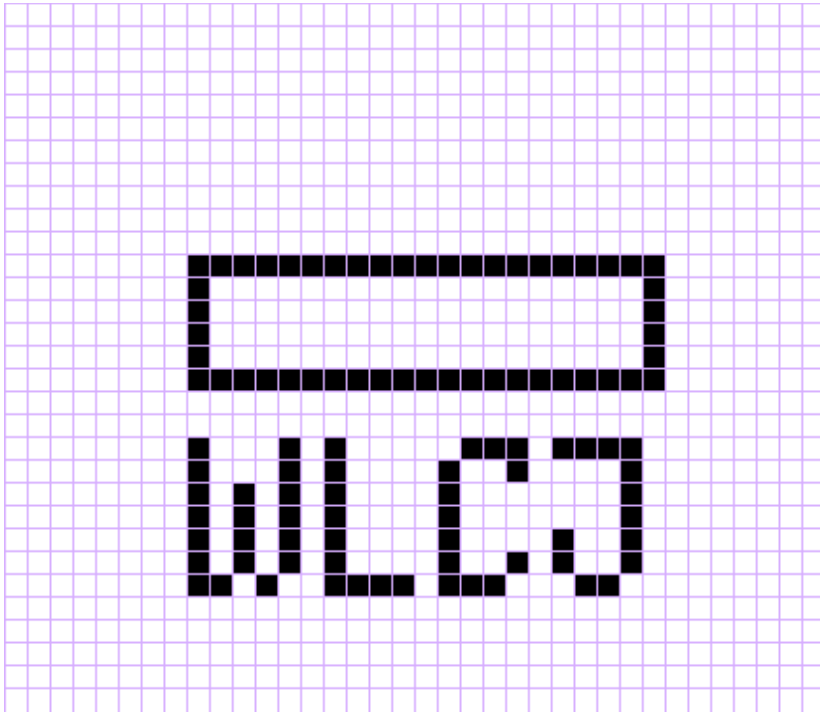


**SIDES  
MAKE 2**



**TOP SIDES  
MAKE 4**





## **TOP MAKE 1**

**Cut out center  
and stitch around  
opening**

## **BOTTOM MAKE 1 SAME AS TOP BUT UNSTITCHED**

## **ASSEMBLING**

Make a box by placing sides one unstitched bottom and overcasting the pieces together.

Cut the opening on the box top. Overcast to finish the edge.

Make the box top by placing the 3 sides on the stitched top. Stitch the short side edges together to form overhanging edges of box.

Overcast box to the side of the box top without a side piece.