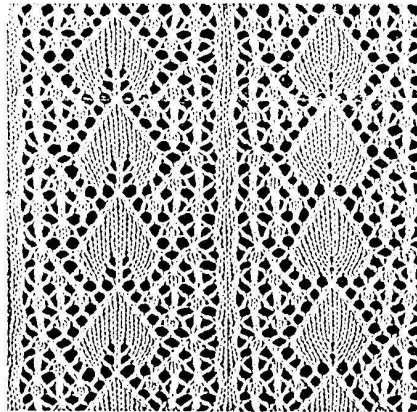


Knitted *Atarah*

Marilyn Lerner, Highland Park, New Jersey

This knitted *atarah* utilizes the classic Palm Leaf design. Use size 1 or size 0 needles and a light-weight yarn. You might try a metallic yarn, or a gold or silver yarn with a metallic thread running through it. The knitting directions are as follows:



LEFT: *Palm Leaf With Mesh*
RIGHT: *Variation*

Here the classic Palm Leaf is placed on an openwork background, making a charming design for a wide insertion or for combination with other panels. The difference between the original panel and its variation is slight (just a *yo, k1, yo* opposed to a *k1, yo, k1*) but it determines whether the Leaf is open or closed at the center of its base.

Panel of 23 sts.

Row 1 (Wrong side) and all other wrong-side rows—Purl.

Row 2—Ssk, yo, sl 2—k1—p2sso, yo, k1-b, yo, ssk, k7, k2 tog,
yo, k1-b, yo, sl 2—k1—p2sso, yo, k2 tog.

Row 4—Ssk, yo, k1, yo, k3, yo, ssk, k5, k2 tog, yo, k3, yo, k1,
yo, k2 tog.

Row 6—K1, (yo, sl 2—k1—p2sso) twice, yo, k1-b, yo, ssk, k3, k2
tog, yo, k1-b, (yo, sl 2—k1—p2sso) twice, yo, k1.

Row 8—(K1, yo, k3, yo) twice, ssk, k1, k2 tog, (yo, k3, yo, k1)
twice.

Row 10—Ssk, (yo, sl 2—k1—p2sso) 3 times, yo, k1-b, yo, sl 1—k2 tog—pssso, yo, k1-b,
(yo, sl 2—k1—p2sso) 3 times, yo, k2 tog.

Row 12—Ssk, yo, k1, yo, k2, k2 tog, yo, k3, yo, k1, yo, k3, yo, ssk, k2, yo, k1, yo,
k2 tog.

Row 14—K1, (yo, sl 2—k1—p2sso) twice, yo, k2 tog, k3, yo, k1, yo, k3, ssk, (yo, sl
2—k1—p2sso) twice, yo, k1.

Row 16—K1, yo, k2, k2 tog, yo, k2 tog, k9, ssk, yo, ssk, k2, yo, k1.

Repeat Rows 1-16.